

# Gallatin County Rural Fire Operating Plan



February 4, 2020



**Contents**

- 1 Overview ..... 4
- 2 Definitions ..... 6
- 3 Land Classifications..... 9
  - 3.1 Fire Protection Agency..... 9
  - 3.2 Forest Lands ..... 9
  - 3.3 Federal Lands..... 10
  - 3.4 Unprotected Lands ..... 10
- 4 County Apparatus..... 11
  - 4.1 Usage ..... 11
  - 4.2 Maintenance ..... 11
  - 4.3 Insurance..... 12
  - 4.4 Personnel Qualifications ..... 12
  - 4.5 Outfitting ..... 12
- 5 Co-op Engine..... 13
  - 5.1 Usage ..... 13
  - 5.2 Maintenance ..... 13
  - 5.3 Insurance..... 14
  - 5.4 Personnel Qualifications ..... 14
  - 5.5 Outfitting ..... 14
- 6 DNRC Hybrid Apparatus ..... 14
  - 6.1 Useage ..... 15
  - 6.2 Maintenance ..... 15
  - 6.3 Insurance..... 15
  - 6.4 Personnel Qualifications ..... 15
  - 6.5 Outfitting ..... 16
- 7 County Assist..... 17
- 8 Mutual Aid ..... 17

9	Fire Warden.....	19
9.1	Deputy Fire Wardens.....	19
10	Fire Control Ordinance.....	20
10.1	Training Funds .....	21
11	Firefighter Insurance.....	22
12	Incident Deployment.....	23
12.1	Deputy Fire Wardens.....	23
12.2	Incident Accountability.....	23
12.3	Incident Expenses .....	23
12.4	Response Plan Areas.....	24
13	Agreement of Participation.....	29

## 1 Overview

The intent of this document is to provide clear understanding of roles and responsibilities in regard to Title 7, Chapter 33, Part 22, Montana Code Annotated (Rural Fire Protection Code or RFPC) and the Montana Department of Natural Resources and Conservation's Cooperative Fire Control & Cooperative Equipment Agreements within Gallatin County.

The Gallatin County Rural Fire Program has the following primary functions:

- Manage and coordinate wildfire suppression in unprotected portions of Gallatin County (outside of organized fire protection agencies and federal land management agencies).
- Coordinate wildfire suppression activities among fire protection agencies in Gallatin County, and adjacent jurisdictions.
- Maintain county's participation in the DNRC Co-op Program.
- Coordinate wildfire training within Gallatin County in support of the DNRC Co-op Agreement.
- Provide representation for the Gallatin County Commission on wildfire related issues.
- Coordinate placement and support of County Apparatus and Co-op Engines.
- Manage the Gallatin County Burn Permit System and established controlled burning season.
- Coordinate activity restrictions due to fire hazard.
- Administer the Gallatin County Rural Fire Program and Fire Control Fund Budgets.

This program is based on the philosophy that it is more effective for Gallatin County to work cooperatively with local fire protection agencies to suppress wildfire compared to the County maintaining their own firefighters. To accomplish this; participating local fire agencies contribute in the following ways:

- Local Fire Protection Agencies provide personnel for firefighting as a mutual aid resource. These personnel respond to agencies in the following configurations:
  - Staffing a Gallatin County Wildland Engine
  - Staffing a DNRC Co-Op Wildland Engine assigned to Gallatin County.

- Staffing a fire apparatus owned by their agency.

In exchange for this support, Gallatin County contributes the following:

- Maintains both County and Co-Op Engines.
- Apparatus assigned to participating agencies can be used for their own incidents.
- Provides cached resources and equipment for response to extended incidents.
- Develops and maintains County Deputy Fire Wardens with expertise in wildland firefighting.
- Provides supplemental catastrophic accident insurance for all firefighters in Gallatin County.
- Supports training activities with both coordination and funding.
- Additional responsibilities of Gallatin County identified in this plan.

## 2 Definitions

Cooperative Fire  
Control Program

The Cooperative Fire Control Agreement exists between Gallatin County and MT DNRC and satisfies the requirements of MCA 7-33-2210. Enrollment in the Co-op Program provides access to DNRC programs and establishes commitments on the County's side. This agreement provides the process for the State to support local fire departments through the County.

[DNRC Cooperative](#)

[Fire Control Agreement](#)

Agreement between Gallatin County and DNRC that establishes Gallatin County as a cooperative county for wildfire protection.

[DNRC Cooperative](#)

[Equipment Agreement](#)

Agreement between Gallatin County and DRNC for assignment of cooperative equipment in Gallatin County.

Participating Agency

A fire protection agency in Gallatin County who has in their possession (assigned to them) either a Gallatin County Engine, a DNRC Co-op Engine, or DNRC Hybrid Apparatus allocated to Gallatin County.

County Apparatus

An apparatus (engine or support unit) owned and supported by Gallatin County Rural Fire.

Gallatin County Rural  
Fire

The program within Gallatin County assigned the responsibility for administering the functions of this plan. This program is part of Gallatin County Emergency Management

Co-op Engine

An engine owned by MT DNRC that is assigned to Gallatin County and has been issued to a specific agency.

County Rural  
Fire Chief

The individual responsible for fulfilling the requirements outlined in the MCA for rural fire protection in suppression of wildland fires on unprotected lands. Notwithstanding the fact that the duties of the Gallatin County Rural Fire Chief position is distinct from the County Fire Warden as set forth in MCA 7-33-2215(3) the Gallatin County Rural Fire Chief acts as the County Fire Warden for the purposes of administration of this Plan.

County Fire Warden

A position defined and required by Gallatin County's Cooperative Fire Control Agreement with DNRC. Primary function is to act as a primary contact between local, state, and federal agencies to coordinate training and wildland fire prevention, detection, suppression, investigation, and mitigation as set forth in MCA 7-33-2215(3). The County Fire Warden shall coordinate with DNRC in support of the Cooperative Fire Control Agreement.

DNRC Fire Warden

A position defined in MCA 76-13-116 which DNRC appoints to act as their agent. This is a different function and position than a County Fire Warden.

Deputy County Fire  
Warden

An individual who has authority delegated to him or her to act on behalf of the County Fire Warden. If necessary and to the extent allowable by law a Deputy Fire Warden shall be considered a Deputy County Rural Fire Chief.

Affidavit Land(s)

Privately owned land in which the owner has voluntarily opted to pay property taxes for wildfire protection from DNRC.

Wildland Fire

Protection District	A district created for protection of land classified as "forest land" from wildfire in which a property tax is collected for protection from DNRC.
Offset Protection	In Montana, state and federal land management agencies have exchanged protection responsibilities for some lands where it is more practical for another agency to protect it. Gallatin County contains a large amount of offset protection where the US Forest Service protects private property on DNRC's behalf.
DNRC Hybrids	MT DNRC will sometimes enter into agreements with local agencies to build joint apparatus. Typically the local agency provides the chassis and the State provide the water handling equipment.
Open Burning	Controlled burns conducted under the authority of the Fire Control Ordinance requiring a permit. Open burning season runs annually from March 1 to November 30. See <a href="#">Gallatin County Fire Control Ordinance</a> for more information.
Burn Ban	Process by which the Gallatin County Commission can restrict activities based on high fire danger. See <a href="#">Gallatin County Fire Control Ordinance</a> for more information.



### 3 Land Classifications

In regard to wildland fire response, land in Gallatin County falls into several categories for protection. Each type of protection is provided through different methods and agencies. In some situations concurrent coverage exists.

#### 3.1 Fire Protection Agency

Montana law dictates through [Title 7, Chapter 33, Parts 21 through 24, MCA](#) that the majority of privately owned land in the populated areas of the county is within the boundaries of an organized fire protection agency such as a rural fire district, fire service area, or municipal fire department in which taxes or fees are collected for services. These agencies are responsible for wildfire suppression as well as other services. Most of these agencies have primary protection responsibility; however in some cases, rural fire districts overlap state and federal protection, creating concurrent protection responsibilities for wildfires.

#### 3.2 Forest Lands

Privately owned forest land in much of Gallatin County is also in a wildland fire protection district pursuant to [Title 76, Chapter 13, Part 2, MCA](#). Wildland fire protection districts are created by the Montana Department of Natural Resources and Conservation with a vote of the affected land owners. Property within an established wildland fire protection district is mandatorily assessed for wildfire protection from DNRC. In some cases property within a wildland fire protection district is also within a rural fire district or fire service area, resulting in concurrent coverage.

Landowners of forest land not in a wildland fire protection district may choose to have their land assessed for protection from wildland fire by the DNRC ([MCA 76-13-212](#)) as Affidavit Land.

All land in Gallatin County in a wildland fire protection district, or assessed affidavit land, is protected on the DNRC's behalf by the USDA Forest Service. This is conducted by an agreement known as a protection offset in which the Forest Service protects the land in Gallatin County on DNRC's behalf and DNRC protects Forest Service land on their behalf in

another area of the state. As part of this agreement, the Forest Service is responsible for wildfire suppression activities and suppression costs for fires on this land. The DNRC still retains administrative control of this land. Large amounts of offset protection exists in the Bridgers, Bangtails, Northern Gallatin Range, Big Sky, and West Yellowstone. Because of this, the Forest Ownership Boundary is different than the Forest Services' Protection Boundary.

### 3.3 Federal Lands

Most federal lands in Gallatin County are under wildfire protection from their respective land management agency. This primarily consists of the Gallatin National Forest and Yellowstone National Park having protection on the Southeast side of Gallatin County. Small sections of Bureau of Land Management land does exist in Gallatin County and it is protected by the USDA Forest Service.

### 3.4 Unprotected Lands

Gallatin County is responsible for [suppression of wildfires](#) on private lands not falling into any of the categories listed above. Most of this area is contained in the Northern half of the county.

## 4 County Apparatus

County Apparatus consists of all Gallatin County owned equipment such as engines, support vehicles, trailers, and assorted equipment. Some of this equipment will be assigned to participating agencies for their use with the understanding that in return they will assist with wildfire in the unprotected areas.

### 4.1 Usage

County Apparatus that has been assigned to participating agencies is at the full disposal of the agency and may be used for incidents outside of wildfires in unprotected areas. The expectation is that when Gallatin County Rural Fire has a wildfire occur in an unprotected area, that participating agencies will respond within their ability.

### 4.2 Maintenance

County Apparatus is owned by Gallatin County and, as such, the County will support the maintenance of that equipment. Participating agencies are responsible for performing routine vehicle checks of apparatus assigned to them. Participating agencies are also responsible for routine fuel costs as they are using the apparatus for their needs.

Routine maintenance, such as oil changes, should be incorporated into the participating agency's normal process used for their own equipment. The costs incurred for the maintenance of County Apparatus should be forwarded to the Chief of EM & Fire for reimbursement. It is expected that actual costs for the maintenance supplies will be submitted (For example, cost of oil used, cost billed by oil change facility, cost of air filters, etc...). Personnel costs incurred for man hours spent on activities related to County Apparatus are not reimbursable. Reimbursement requests must be submitted within 3 months of the work, or they may not be reimbursed. This is viewed as part of the participating agency's contribution in exchange for the use of the County Apparatus for their own uses.

Major repairs in excess of \$250, or anything in question, must be coordinated with the County Chief of EM & Fire before any costs are incurred.

### 4.3 Insurance

Insurance for County Apparatus is carried by Gallatin County. Personnel responding on these apparatus shall follow their fire department's fleet safety program. The department's fleet safety program must reasonably meet Gallatin County's requirements. All personnel must be covered by workers compensation insurance through their fire protection agency.

### 4.4 Personnel Qualifications

By accepting assignment of a County Apparatus, the participating agency is agreeing that the personnel that will be operating that apparatus are properly trained on the apparatus and qualified for their position in accordance with recognized standards ([PMS 310-1](#)) and laws.

### 4.5 Outfitting

All County Apparatus is outfitted with a standard complement of equipment when assigned to the participating agency. The participating agency can add or remove equipment to meet an apparatus configuration that meets their needs. When County Apparatus is returned to the County from a participating agency that apparatus must be equipped identically to how it was issued.

County Apparatus in the form of engines will be outfitted, as a minimum, according to the current [Northern Rockies Supplement to Chapter 20 of the Interagency Incident Business Management Handbook](#). County apparatus will also be equipped with a mobile radio and emergency warning package.

## 5 Co-op Engine

Co-op engines are owned by the State of Montana and are issued to Gallatin County for assignment among fire agencies in the county. The Chief of EM & Fire will distribute these engines to participating agencies throughout the county.

### 5.1 Usage

Co-op engines that have been assigned to participating agencies are at the full disposal of the agency and may be used for incidents outside of wildfires in unprotected areas. The expectation is that when Gallatin County Rural Fire has a wildfire occur in an unprotected area, that participating agencies will respond within their ability.

### 5.2 Maintenance

Co-op engines are owned by the State of Montana and, as such, the State and County will support the maintenance of that equipment. Participating agencies are responsible for performing routine vehicle checks of apparatus assigned to them. Participating agencies are also responsible for routine fuel costs as they are using the apparatus for their needs.

Routine maintenance, such as oil changes, should be incorporated into the participating agency's normal process used for their own equipment. The costs incurred for the maintenance of co-op engines should be forwarded to the Chief of EM & Fire for reimbursement. Gallatin County will cover routine maintenance items. It is expected that actual costs for the maintenance supplies will be submitted (For example, cost of oil used, cost billed by oil change facility, cost of air filters, etc...). Personnel costs incurred for man hours spent on activities related to co-op engines are not reimbursable.

Reimbursement requests must be submitted within 3 months of the work, or they may not be reimbursed. This is viewed as part of the participating agency's contribution in exchange for the use of the co-op engine for their own uses.

Major repairs exceeding \$250, or anything in question, must be coordinated with the County Chief of EM & Fire before costs are incurred. The County Chief of EM & Fire will coordinate with the MT DNRC on how they want to handle the repair. In most situations, DNRC's in-house mechanics will make the repair.

### 5.3 Insurance

Insurance for co-op engines is covered by the Montana Department of Natural Resources and Conservation through the Cooperative Fire Control Agreement with Gallatin County. Personnel responding on these apparatus are considered to be responding as mutual aid and are covered through their fire protection agency's insurance including workers compensation.

### 5.4 Personnel Qualifications

By accepting assignment of a co-op engine, the participating agency is agreeing that the personnel that will be operating the engine are properly trained on the apparatus and qualified for their position in accordance with recognized standards ([PMS 310-1](#)) and laws.

### 5.5 Outfitting

Co-op engines are outfitted with a standard complement of equipment when assigned to the participating agency. The participating agency can add or remove equipment to meet an apparatus configuration that meets their needs. When a co-op engine is returned from a participating agency to the county, that apparatus must be equipped identically to how it was issued.

DNRC Co-op engines will be outfitted, as a minimum, according to the current [Northern Rockies Supplement to Chapter 20 of the Interagency Incident Business Management Handbook](#). The addition of radios and emergency warning equipment is typically the responsibility of the participating agency.

## 6 DNRC Hybrid Apparatus

Hybrid apparatus are jointly built between the MT DNRC and a local fire agency. Typically the chassis is owned by the fire agency and the water handling equipment and supplies are owned by DNRC.

## 6.1 Useage

Since the local fire agency owns the chassis, hybrid apparatus are not allocated by the Chief of EM & Fire. Use of this apparatus is at the sole discretion of the local fire agency.

## 6.2 Maintenance

Due to the joint ownership, the local fire agency is responsible for all operational and repair costs associated with the chassis.

While the water handling equipment is assigned by DNRC to Gallatin County through the Cooperative Equipment Agreement, hybrid apparatus are not considered part of Gallatin County's fleet. The local fire agency is responsible for operational and maintenance costs of the water handling equipment and supplies. Gallatin County may be able to assist in some situations.

Major repairs, or anything in question, must be coordinated with the County Chief of EM & Fire. The County Chief of EM & Fire will coordinate with the MT DNRC on how they want to handle the repair. In most situations, DNRC's in-house mechanics will make the repair.

## 6.3 Insurance

Insurance for hybrid apparatus is the responsibility of the local fire protection agency. Personnel responding on these apparatus are covered through their fire protection agency's insurance including workers compensation.

## 6.4 Personnel Qualifications

By accepting assignment of a hybrid apparatus, the participating agency is agreeing that the personnel that will be operating the engine are properly trained on the apparatus and qualified for their position in accordance with recognized standards ([PMS 310-1](#)) and laws.

## 6.5 Outfitting

Hybrid apparatus are outfitted with a standard complement of equipment when received from MT DNRC. The participating agency can add or remove equipment to meet an apparatus configuration that meets their needs.

Hybrid apparatus will be outfitted, as a minimum, according to MT DRNC standard configuration.

All radio communications equipment and emergency warning equipment is the responsibility of the participating fire protection agency.



## 7 County Assist

A "County Assist" is a process in which a coop county (i.e. Gallatin County) can request assistance from the Montana Department of Natural Resources and Conservation for a wildfire that has exceeded the county's ability to manage. This is not a statutory program, but an internal process within DNRC. A key factor in this process is determining if the county is fully committed to the incident. Level of commitment is not a set level, but an agreed upon level between the county and the DNRC Line Officer. This is often measured by the county's financial and resource commitment to the incident.

When this situation occurs, a request is made to the DNRC by Gallatin County for a county assist outlining what our needs are. This then enables the DNRC to deploy resources and financial assistance to the incident. A county assist requires a formal request to DNRC from the Gallatin County Commission within 48 hours. Specific information on the county [assist process](#) is contained in the Annex F of the Gallatin County Emergency Management Plan.

## 8 Mutual Aid

Gallatin County Rural Fire is a signatory to the [Gallatin County Mutual Aid Agreement](#), and is allowed by state statute to request mutual aid without a formal agreement. Gallatin County Rural Fire may request assistance from agencies for non-County Apparatus and co-op engines for use in suppression of wildfires in unprotected areas. Gallatin County Rural Fire resources are also available upon request for mutual aid in support of another agency's incidents.

Agencies in Gallatin County wishing to use Gallatin County Rural Fire resources through mutual aid must include these resources (through the agency hosting the resource) in their deployment plan through 911.

A common mutual aid partner with Gallatin County is the Montana Department of Natural Resources (usually aviation resources). Mutual Aid can be requested and granted by DNRC without the need of meeting the requirements of a county assist.

Gallatin County is a signatory of the [South Central Zone Operating Plan](#) between Gallatin and Park Counties, Custer Gallatin National Forest, Yellowstone National Park, and Montana DNRC. This agreement gives the county access to federal wildfire resources in the area and the region.

## 9 Fire Warden

The [County Fire Warden](#) is appointed by name by the Gallatin County Commission. The Fire Warden is responsible for carrying out the duties outlined in this plan that consist of the County Rural Fire Chief functions as outlined in the Montana Code Annotated and the County Fire Warden functions as outlined in the Montana DNRC Cooperative Fire Control Agreement. The Gallatin County Chief of Emergency Management and Fire has named responsibility for both these roles.

The Chief of EM & Fire is authorized to represent Gallatin County as its Line Officer on matters within the scope of this plan. The Chief of EM & Fire may appoint Deputy Fire Wardens and delegate authority to them as he or she sees fit.

### 9.1 Deputy Fire Wardens

Deputy Fire Wardens are agents of the Gallatin County Chief of EM & Fire as necessary and have had specific authorities delegated to them. The Deputy Fire Wardens will primarily serve as representatives of the County at meetings or training, serve in leadership positions at wildfires, or provide support to county apparatus and co-op engines.

Deputy Fire Wardens are identified by the Gallatin Chief of EM & Fire (with delegated authority for the Gallatin County Commission) and provided delegated authority to fulfill the duties outlined by this plan. Usually Deputy Fire Wardens are identified ahead of time, however certain situations may necessitate temporary authorization by the Chief of EM & Fire.

When functioning as a Deputy Fire Warden, if the person is not functioning as an employee of a fire protection agency, then the person is considered a volunteer for Gallatin County and thus covered by workers compensation and liability insurance but they will not receive wages. The normal circumstances where insurance coverage for volunteer Deputy Fire Wardens are: fire incidents, training approved by the County Chief of EM & Fire, and during meetings requested by the County Chief of EM & Fire.

Use of Deputy Fire Wardens' personal vehicles will be paid current Interagency Incident Business Handbook rate to the vehicle's owner.

## 10 Fire Control Ordinance

The Chief of Emergency Management and Fire is responsible for administration of the Open Burning Permit system on behalf of the local fire protection agencies in accordance with regulations adopted under [County Ordinance](#). Each fire protection agency in Gallatin County has certain responsibility for enforcement and approval of burning in their district.

Gallatin County has contracted with Fluent IMS to provide an online burn permit system located at [gallatinburnpermits.com](http://gallatinburnpermits.com). This system allows individuals to purchase and activate burn permits themselves (permits may also be purchased in person at several locations in the county). Authorized users are able to view current burn activity as well as close open burning. County regulations allow the prohibition of burning for certain parts of the County. It is strongly suggested that agencies in adjacent geographic areas act in unison to avoid confusion with the public.

When a Burn Ban is deemed necessary by a fire chief in Gallatin County, a request to the Chief of Emergency Management and Fire will be made to coordinate the request. The Chief of EM & Fire, or designee, will facilitate a conference call between all available fire protection agencies to discuss the request. If the consensus of the participating fire chiefs is to cease burning activity, the Chief of EM & Fire will request the County Commission to consider implementing a Burn Ban in accordance with the [ordinance](#).

Burn permit fees are collected in the Fire Control Fund for two purposes. First, all costs of operation and administration the program are covered out of this fund. Second, remaining money is used to fund fire training for firefighters within Gallatin County.

Agencies selling burn permits in person (collecting cash or check) are entitled to retain 60% of the burn permit fee as a processing fee. The other 40% will be submitted to the Gallatin County Treasurer for deposit into the Fire Control Fund. Burn permits sold online have 100% of the cost deposited into the Fire Control Fund.

## 10.1 Training Funds

Funding in the Fire Control Fund beyond what is needed to run the program will be used to support training for fire departments in Gallatin County. The training funds will primarily be used to help support bringing training classes into the county and to pay tuition for firefighters to attend classes. Agencies wishing to use these funds must submit a request in writing to the Gallatin County Chief of EM & Fire that outlines the training opportunity, who will be attending, and the cost.

Costs for approved training shall be paid for by the individual being trained or their agency. Upon completion of the training, proof of attendance and submittal of documentation (e.g. invoices, claims and vouchers) must be submitted to the County Chief of EM & Fire. Gallatin County may then reimburse the costs by check.

## 11 Firefighter Insurance

Gallatin County maintains certain insurance for firefighters in the county as part of the county's contribution to this program. Benefits are provided in excess of worker's compensation for active firefighters in the county as follows:

### Supplemental Insurance

Accidental Death and Dismemberment Catastrophic Loss Benefit	Principal Sum: \$25,000.00
Accidental Medical Expense Benefit	Maximum Benefit Amount: \$10,000.00 Deductible Amount: \$0.00
Heart or Circulatory Malfunction Benefit (death)	Principal Sum: \$25,000.00
Accelerated Benefit (Living Benefit)	Maximum Benefit Amount: \$12,500.00

## **12 Incident Deployment**

Gallatin County Rural Fire responds to incidents in unprotected areas using a combination of Gallatin County resources, DNRC co-op engines, and mutual aid resources, the deployment of which has been established to make efficient use of those resources based on location.

### **12.1 Deputy Fire Wardens**

Deputy Fire Wardens are automatically dispatched on all incidents. Deputy Fire Wardens will coordinate amongst themselves regarding which Deputy Fire Warden will respond. Once a Deputy Fire Warden is committed as responding to the incident, they will notify dispatch that they are responding in this capacity.

### **12.2 Incident Accountability**

The County Rural Fire deployment plan is designed to provide management personnel from the closest fire agencies as well as Deputy Fire Wardens for incidents. The intent for wildfires in unprotected areas is to have the first arriving management personnel establish and assume incident command (IC) of the incident. If the first arriving IC is not a Deputy Fire Warden, it is expected that the IC will continue to manage the incident until a Deputy Fire Warden can get to the scene to assume command. This is to ensure efficient coordination of resources and the safety of both responders and the public. It is not mandatory for a Fire Warden to assume command if it is deemed more appropriate for someone else to assume that role.

### **12.3 Incident Expenses**

Costs incurred by agencies responding to a Gallatin County Rural Fire incident will be covered in accordance with the Gallatin County Mutual Aid Agreement. Typically costs (personnel, equipment rates, etc...) during the initial operational period will be considered mutual aid. Operations after the first operational period are eligible for reimbursement from the County. In accordance with the Gallatin County Emergency Management Plan and the Gallatin County Mutual Aid Agreement, rates will be based on the Interagency

Incident Business Handbook (a.k.a. DNRC Rates) using the Northern Rockies supplements. Agencies requesting reimbursement for paid employees will be reimbursed at each employee's expended rate including benefits. County Apparatus and co-op engines are not eligible for reimbursement for the equipment, but personnel are.

Damages that occur at any point in the incident will be reimbursed (for non-county or state resources) in accordance with the Gallatin County Mutual Aid Agreement. During the first operational period while under mutual aid (not in a pay status), Gallatin County will reimburse up to \$1000 per agency per incident for incident caused damage (this may be superseded by other agreements). Any damage incurred on an incident should be reported to, and coordinated with, the Gallatin Chief of EM & Fire.

Fuel and reasonable welfare items for resources responding to a Gallatin County Rural Fire incident will be provided (all types of resources).

Agencies may choose not to be reimbursed for any of the items listed in this section.

## 12.4 Response Plan Areas

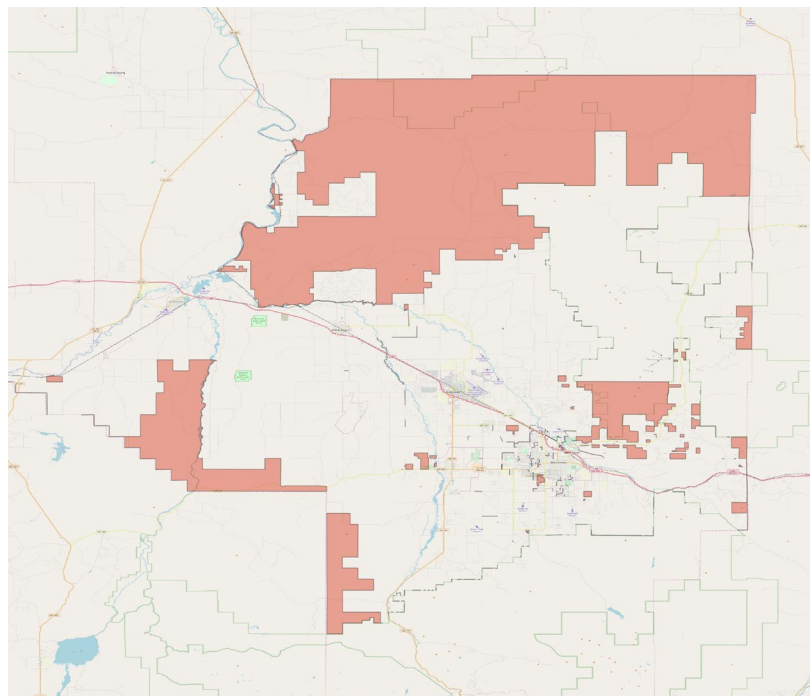
Spanish Creek	North of Spanish Peaks area of Gallatin National Forest, South of Axtell Anceney Road, East of Madison County Line (Beaverhead-Deerlodge National Forest), West of US 191. Basically the West side of the Flying D Ranch North to Axtell Anceney Road.
Norris	Norris road along the river.
West Madison River	North of Blacks Ford Fishing Access and West of the Madison River. Runs North to Willow Creek and Three Forks Fire Districts.
Horseshoe	North of Gallatin River, South of Broadwater County, East of Missouri River, West of Horseshoe Hills. Basically the areas accessed through Clarkston, Horseshoe Cottonwood Road, etc...



Maudlow North of Gallatin River and Central Valley Fire District, South of Broadwater County, East of Horseshoe Hills, West of Bridger Range of Gallatin National Forest. Basically the area accessed from Dry Creek Road and assorted spurs.

Sedan North of Sedan Fire District, South of Meagher County Line, East of Gallatin National Forest, West of Park County Line. Basically the area North of Sedan along the East end of 16 Mile.

Bozeman Islands of unprotected within the City of Bozeman. Primarily off of Griffin and Bridger Drives.



<b>Horseshoe Response Area</b>	
<b>Initial Dispatch</b>	
County Rural Fire	Fire Wardens
Clarkston Fire	1 wildland, 1 management staff
Manhattan Fire	1 wildland
Three Forks Fire	1 wildland
Gallatin River Ranch	1 tender
Central Valley	1 management staff
<b>Spanish Creek Response Area</b>	
<b>Initial Dispatch</b>	
County Rural Fire	Fire Wardens
Gallatin Gateway Fire	1 wildland, 1 management staff
Amsterdam Fire	1 wildland
Central Valley Fire	1 wildland
Hyalite Fire	1 tender, 1 management staff
<b>Norris Response Area</b>	
<b>Initial Dispatch</b>	
County Rural Fire	Fire Wardens
Amsterdam Fire	1 wildland
Gallatin Gateway Fire	1 wildland, 1 Management Staff
Central Valley Fire	1 wildland
Hyalite Fire	1 tender, 1 management staff
<b>West Madison River Response Area</b>	
<b>Initial Dispatch</b>	
County Rural Fire	Fire Wardens
Amsterdam Fire	1 wildland
Gallatin Gateway Fire	1 wildland, 1 Management Staff
Three Forks Fire	1 wildland
Willow Creek Fire	1 tender, 1 management staff

<b>Maudlow Response Area</b>	
<b>Initial Dispatch</b>	
County Rural Fire	Fire Wardens
Manhattan Fire	1 wildland
Central Valley Fire	1 wildland, 1 management staff
Bozeman Fire	1 wildland
Hyalite Fire	1 tender, 1 management staff
<b>Sedan Response Area</b>	
<b>Initial Dispatch</b>	
County Rural Fire	Fire Wardens
Bridger Canyon Fire	1 wildland, 1 management staff
Fort Ellis Fire	1 wildland, 1 management staff
Sedan Fire	1 wildland
Hyalite Fire	1 tender, 1 management staff
Bozeman Fire	1 wildland
<b>Bozeman Response Area</b>	
<b>Initial Dispatch</b>	
County Rural Fire	Fire Wardens
Bozeman Fire	1 wildland, 1 management staff
Central Valley Fire	1 wildland
Fort Ellis Fire	1 wildland
Hyalite Fire	1 tender, 1 management staff

## Approval & Implementation

### Gallatin County Rural Fire Protection Operating Plan

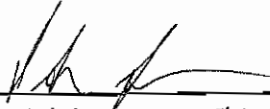
This operating plan is hereby approved by the Board of Gallatin County Commissioners and shall be filed with the Gallatin County Clerk and Recorder. This plan is effective February 4, 2020 and supersedes all previous editions and shall remain in effect until revised or rescinded.



Donald F. Seifert, Chair

02/04/2020

Date



Patrick Lonergan, Chief of EM & Fire

12/27/2019

Date

### 13 Agreement of Participation

As a signatory to the 2020 version of the Gallatin County Rural Fire Protection Operating Plan, \_\_\_\_\_ is certifying that it agrees to the conditions and responsibilities outlined in this plan. Participating Agencies that have Gallatin County or DNRC resources assigned to them are agreeing to the respective responsibilities for the Participating Agencies and Gallatin County as outlined in this plan.

6 months notice must be given to Gallatin County by a Participating Agency that no longer wishes to participate in this program, and return assigned resources. If Gallatin County chooses to reallocate assigned resources, 6 months notice will be given to the Participating Agency. Changes in participation and resource allocation may be made sooner than 6 months if mutually agreed upon by both parties.

_____	_____
Chief Elected Official Name	Fire Chief Name
_____	_____
Title	Fire Chief Signature
_____	_____
Chief Elected Official Signature	Date
_____	_____
Date	Agency Name