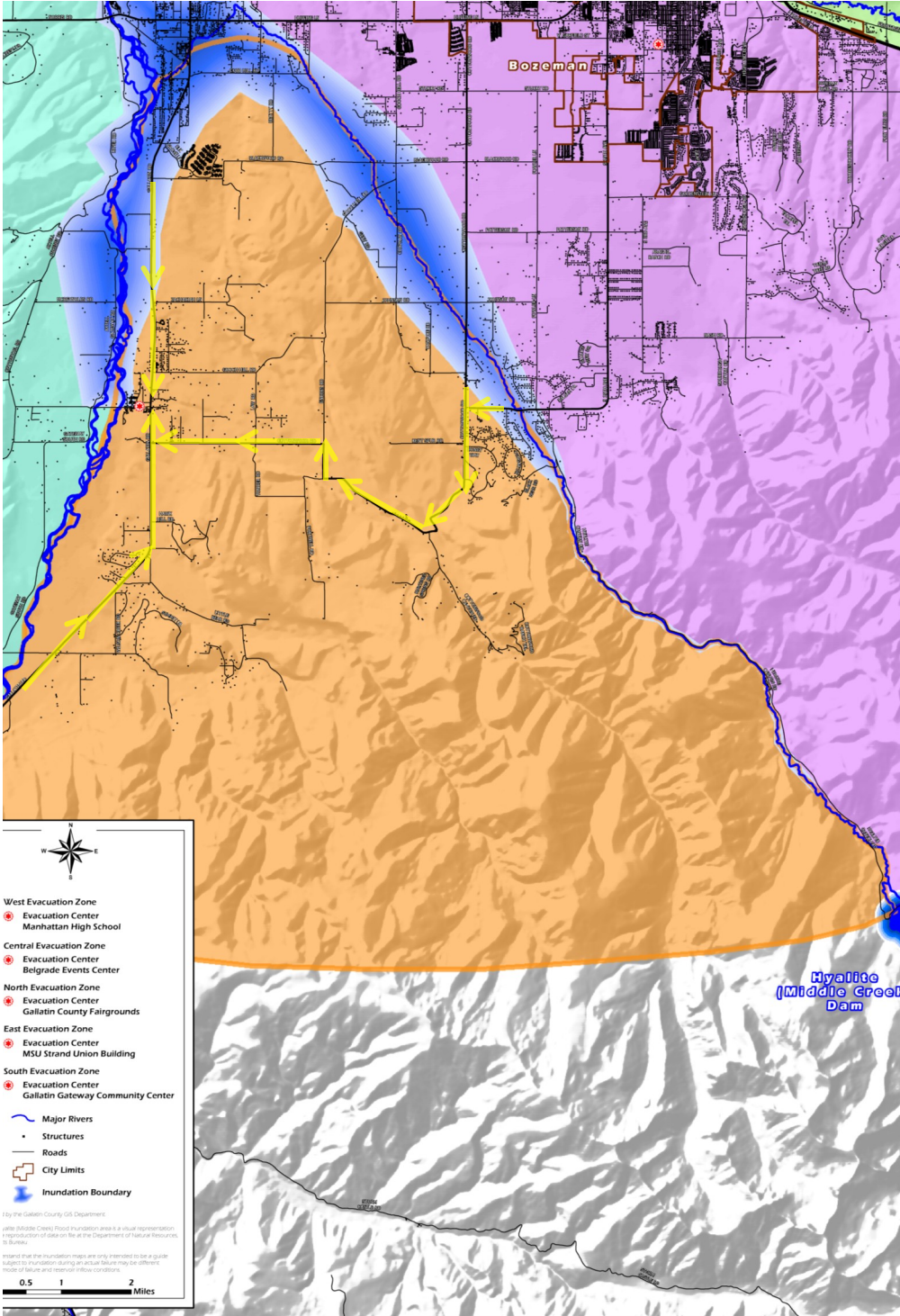




# South Zone

## Middle Creek Early Warning System



**In the event of a Middle Creek Dam Failure, you should:**

**Travel Direction:**

Move to the South away from the inundation area.

**Travel Routes:**

Utilize major roads, such as:

- Gallatin Rd (US 191)
- Cottonwood Rd

**Shelter & Reunification Area:**

Gallatin Gateway Community Center  
 145 Mill Street  
 Gallatin Gateway, MT

**Inundation Travel Time:**

Mouth of Hyalite: 30 minutes  
 Four Corners: 2 hours  
 Gallatin River @ I-90: 6.9 hours

**Preparedness Activities:**

- Develop an emergency plan and practice it
- Ensure you are equipped to receive notifications multiple ways
- Practice your plan

**Planning Resources:**

[www.ReadyGallatin.com](http://www.ReadyGallatin.com)  
[www.Ready.gov](http://www.Ready.gov)