



## Earthquakes in Gallatin County

Gallatin County, with the Intermountain Seismic Belt running through the middle, is historically very prone to earthquakes. In fact Montana has 7-10 earthquakes occur each day making it the fourth most seismically active state. The 14th largest earthquake in the contiguous United States occurred in 1959 at Hebgen Lake. The Hebgen Lake Earthquake measured Magnitude 7.5, killed 28 people, displaced 80 Million tons of rock, and caused over 11 Million dollars in damage.



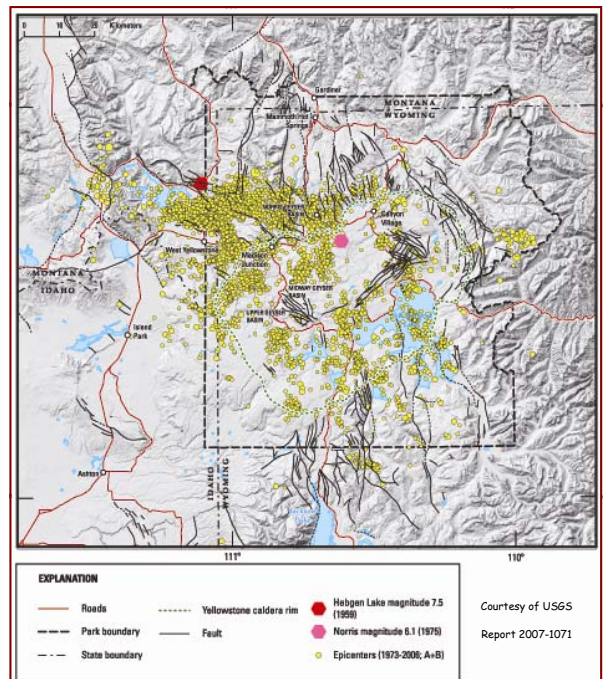
USGS SJR0007

Yellowstone National Park is one of the largest volcanic systems in the world. The formation of Yellowstone is the result of several large eruptions, each forming components that make up the park today. Activity in this volcanic system results in several thousand earthquakes each year in the park. In 1975 a 6.1 earthquake occurred in Norris Geyser Basin.



CRB00656

Between the active faults, and volcanic systems, the region around Gallatin County is very prone to earthquakes. To learn more about the region and how you can become better prepared, please visit [www.readygallatin.com](http://www.readygallatin.com).

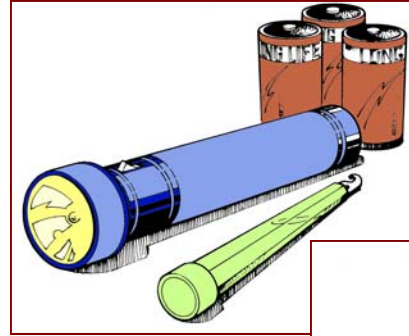


[www.readygallatin.com](http://www.readygallatin.com)

Gallatin County Emergency Management  
P.O. Box 1230, Bozeman, MT 59771-1230  
(406) 582-2350

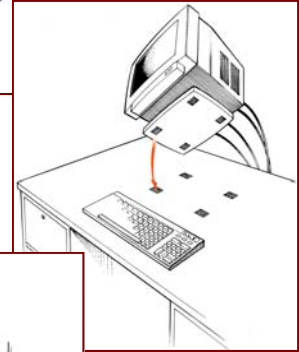
### What if an earthquake occurs?

1. Drop, Cover, and Hold
2. Be alert for items that can fall, expect aftershocks to occur
3. Follow Your Family Emergency Plan



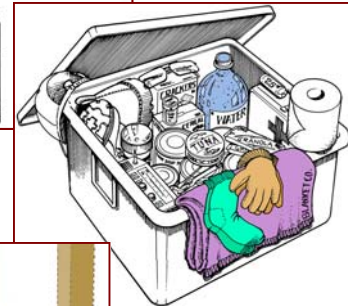
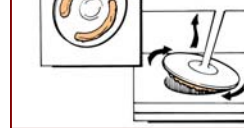
### What is a Family Emergency Plan?

A family emergency plan is a written, agreed upon, response that each member of your family will follow if emergency occurs. Sample Family Emergency Plans are available at [www.readygallatin.com](http://www.readygallatin.com).



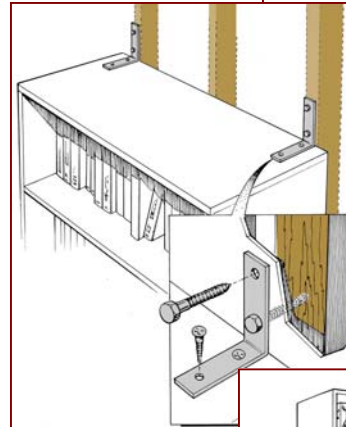
### What is a 72 Hour Kit?

A 72 hour kit is composed of items that you, and your family, will need to be self sufficient for 72 hours. These items should be non-perishable and stored together.



### What can I do to decrease the damage to my family and house?

Many simple and inexpensive tasks can be done to become ready. First, every family should have a plan. Next you should identify your emergency supplies. Many family possessions can be saved by properly securing them. Your house can also be strengthened with some minor retrofits.



### Where do I get additional information?

Complete information of preparing your family and house is available at [www.readygallatin.com](http://www.readygallatin.com).

